



TITLE: Characterization of extra-hard cheese produced from donkeys' and caprine milk mixture

AUTHORS: Ljubiša C. Šarić, Bojana M. Šarić, Anamarija I. Mandić, Miroslav S. Hadnađev, Jasmina M. Gubić, Ivan L. Milovanović, Jelena M. Tomić

This article is provided by author(s) and FINS Repository in accordance with publisher policies.

The correct citation is available in the FINS Repository record for this article.

NOTICE: This is the author's version of a work that was accepted for publication in *Dairy Science and Technology*. Changes resulting from the publishing process, such as peer review, editing, corrections, structural formatting, and other quality control mechanisms may not be reflected in this document. Changes may have been made to this work since it was submitted for publication. A definitive version was subsequently published in *Dairy Science and Technology*, Volume 96, Issue 2, March 2016, Pages 227–241. DOI: 10.1007/s1359401502612

This item is made available to you under the Creative Commons Attribution-NonCommercial-NoDerivative Works – CC BY-NC-ND 3.0 Serbia





Characterization of extra-hard cheese produced from donkeys' and caprine milk mixture

4 Q1

5

Ljubiša Č. Šarić¹ · Bojana M. Šarić¹ ·

6

Anamarija I. Mandić¹ · Miroslav S. Hadnađev¹ ·

7

Jasmina M. Gubić¹ · Ivan Lj. Milovanović¹ ·

8

Jelena M. Tomić¹

9

Received: 29 May 2015 / Revised: 14 September 2015 / Accepted: 15 September 2015

10

© INRA and Springer-Verlag France 2015

11

Abstract Cheese cannot be produced solely from equine or donkeys' milk, because of the unique physic-chemical properties of these milks. The purpose of this study was to characterize a novel dairy product, cheese produced from donkeys' and caprine milk mixture (60:40% v/v), regarding its chemical, microbiological, textural and sensory properties. Fully ripened cheese was classified as a high-fat, extra-hard cheese, with high sodium (29.97 g.kg⁻¹), magnesium (3.07 g.kg⁻¹) and potassium (4.70 g.kg⁻¹) content. The characterization by lab-on-a-chip electrophoresis revealed lysozyme, α -lactalbumin, immunoglobulins and casein fractions. Palmitic (C_{16:0}) and oleic fatty acids (C_{18:2 n9-cis}) with 25.11 and 24.70%, respectively, were found at the highest concentrations. The medium-chain fatty acids account 18.21% of the total fatty acid content in analysed cheese samples. *Escherichia coli*, *Salmonella* spp., Enterobacteriaceae, coagulase-positive staphylococci, *Listeria monocytogenes*, *Bacillus cereus*, *Clostridium perfringens* as well as moulds were under the limit of detection in all analysed samples. After 6 months of cheese ripening (0.94 a_w, pH 4.71), total bacterial count, the counts of lactic acid bacteria and yeasts were 6.34±0.03, 4.80±0.10 and 5.81±0.11 log CFU.g⁻¹, respectively. The texture of mature cheese was moderately hard and crumbly. The cheese was described as very salty with strong pronounced creamy, fatty and acidic taste. The characterized donkey/caprine cheese could position this type of cheese as a high-quality functional product, thus having a potential impact on the market.

12

13

14

15

16

17

18

19

20

21

22

23

24

25

26

27

28

29

30

31

32

✉ Ljubiša Č. Šarić
ljubisa.saric@fins.uns.ac.rs

¹ Institute of Food Technology, University of Novi Sad, Bulevar cara Lazara 1, 21000 Novi Sad, Serbia

Keywords Cheese · Donkeys' milk · Caprine milk	33
	34
1 Introduction	35
Cheese has been produced for more than 4000 years. Throughout the world, there are more than 400 varieties of cheese produced from milk of different dairy animal species, applying various fermentations and aging conditions to meet the specific consumers' needs (O'Brien and O'Connor 2004; Kindstedt 2012). Cheese consumption varies worldwide, from 15 kg per capita per year in Western Europe and USA, to 2 kg or less in Japan, Ukraine and South Africa (Wielicka and Gorynska-Goldmann 2005). Although the majority of commercially available cheeses on the market originate from bovine milk, in some regions, there is a tradition of cheese production from other milk sources, such as buffalo, caprine and sheep milk (Raynal-Ljutovac et al. 2008; Soliman 2005). On the other hand, cheese cannot be produced solely from equine or donkeys' milk, because of their unique physic-chemical properties (Uniacke-Lowe 2011).	36 37 38 39 Q2 40 41 42 43 44 45 46 47 48
Donkeys' milk has been a subject of a research in a past few years, although its therapeutic properties are well known since ancient times. This milk is characterized by low casein content, a high level of essential amino acids, as well as a lipid and protein profile similar to human milk (Salimei et al. 2004). Regarding the content of nutritional compounds, donkeys' milk has a potential to become a dietetic product and a good alternative for the nourishment of infants and children that have developed an allergy to bovine milk proteins (Tidona et al. 2007). Donkeys' milk shows beneficial effects in the prevention of atherosclerosis (Tidona et al. 2007) and possesses antibacterial properties (Šarić et al. 2012).	49 50 51 52 53 54 55 Q3 56 57 58
In cheese making, caseins are transformed by starter culture into curds, forming the basis of cheese. One of the major problems in the use of donkeys' milk in cheese production is its low casein content (Salimei et al. 2004; Guo et al. 2007). Casein content in donkeys' and equine milk (47.3 and 55% w/w of total protein, respectively) is significantly lower than in bovine milk (80% w/w of total protein) (Salimei et al. 2004; Uniacke-Lowe 2011). The composition of donkeys' and equine milk is similar, but the casein content in donkeys' milk is lower compared to that in equine milk. Also, the casein micelles of donkeys' milk are smaller than equine milk micelles (Uniacke-Lowe 2011). However, Uniacke-Lowe (2011) reported that donkeys' milk formed a gel at 30 °C induced by calf chymosin, although it was very weak compared to the gel formed from bovine milk.	59 60 61 62 63 64 65 66 67 68 69
Limitations in the production of cheese from donkeys' milk could be overcome by mixing with caprine milk. Caprine milk was chosen owing to its favourable nutritional quality and well-documented health-promoting effects (Barlowska et al. 2011), since the ultimate goal was to make a unique, highly nutritious functional product of extra quality.	70 71 72 73 74
The aim of this study was to determine the chemical composition, microbiological, textural and sensory properties of cheese produced from the mixture of donkeys' and caprine milk.	75 76 77

2 Materials and methods	78
2.1 Cheese making	79
Donkeys' milk was obtained from an indigenous Serbian breed, Domestic Balkan Donkey, from "Zasavica" Special Nature Reserve, Serbia. Caprine milk was collected from Sanska breed. Cheese was produced according to unique manufacturers' specification at the local goat dairy. Preliminary work with different milk ratios was done in the local goat dairy. The ratio used in this experiment was chosen as the best and further used in cheese production. Only the optimized product specification was available for the authors of the manuscript, while all other details and documentation is confidential and kept in the local goat dairy documentation.	80 81 82 83 84 85 86 87
Donkeys' and caprine milk were mixed in the ratio 60:40% v/v and pasteurized at 65 °C for 30 min. After cooling to 38 °C, commercial starter cultures as 1% inoculation (Clerici-Sacco, Cadorago, Italy) and calcium chloride (food quality grade) (20 g 100 L ⁻¹) were added. Natural rennet (chymosin/pepsin, 96:4% w/w) (Clerici-Sacco, Cadorago, Italy) was added after cooling the milk to 32 °C; the pH of the milk was 7.2. After milk renneting process which lasted for 45 min, the curd was cut, followed by draining off the whey. The obtained soft curds were left overnight at 14 °C for additional draining, and consequently, they were poured into the moulds. Cheese samples were dry salted with coarse-grained sea salt, which contributes to the removal of moisture from the curd. Ripening lasted for 6 months at 14 °C. In order to produce 1 kg of cheese, 25 L of donkeys' and caprine milk mixture was used.	88 89 90 91 92 93 94 95 96 97 98
2.2 Collection of cheese samples	99
Eight cheese samples from the same manufacturing batch were analysed after 6 months of ripening. The samples were immediately chilled to 4 °C and transported to the laboratory where they were kept refrigerated prior the analysis. Chemical, microbiological, textural and sensory analyses as well as fatty acid composition determination were performed on each of the eight samples in three replicates, except for the protein profile that was performed on three cheese samples and from each in three replicates.	100 101 102 103 104 105
2.3 Chemical analyses	106
The contents of total solids, non-casein nitrogen (NCN), total fat, ash, salt, non-protein nitrogen (NPN), casein, and lactose were determined in donkey/caprine cheese according to standard methods (AOAC 2000a, b; FIL-IDF 1981; IDF 1964, 1988, 2001; ISO 2004c; GEA Niro 1978). The total nitrogen content was determined using the Kjeldahl method and was multiplied by a factor (6.38) to determine the crude protein content (AOAC 1975). Moisture content on a fat-free basis (MFFB) and percentage of fat on the dry basis (FDB) were calculated using Codex Standard 283 (1978). Calculation of the energy value of cheese samples was made according to Boikhutso (2010). Water activity (a_w) of samples was measured according to standard method (ISO 2004a) using Testo 650 measuring instrument (Testo AG, USA) with a pressure-tight precision humidity probe. The pH value was measured using the portable pH meter Testo 205 (Testo AG, USA) equipped with a combined penetration tip with temperature probe.	107 108 109 110 111 112 113 114 115 116 117 118

2.4 Quantitative determination of mineral content	119
Cheese samples were prepared by using a laboratory microwave oven (ETHOS 1, Milestone, Italy). Each sample was digested in 7 mL of HNO ₃ and 7 mL of H ₂ O ₂ . After digestion, the samples were transferred to 50-mL test tubes and used for determination of Na, K, Ca, Mg, Fe and Zn by AAS (SpectrAA 10, Varian, Australia). Single-element hollow cathode lamps were used for all elements. La and Cs modifiers were employed for Na, K, Ca and Mg determination, while D2 correction was used for Fe and Zn analysis.	120 121 122 123 124 125 126
2.5 Determination of protein profile	127
A modified method proposed for donkeys' milk sample preparation was used for the determination of the cheese protein profile (Tidona et al. 2011). Twenty-five milligrams of cheese sample was homogenized with 150 µL of extraction buffer (0.125 mol.L ⁻¹ Tris HCl, 4% w/v SDS, 2% w/v glycerol, 2% w/v β-mercaptoethanol, pH 6.8) vortexed and heated at 100 °C for 5 min. The precipitate was removed by centrifugation at 14,000×g for 10 min at room temperature. Supernatant was used for lab-on-a-chip electrophoresis (LoaC method) which was carried out on the Agilent 2100 bioanalyser (Agilent Technologies, Santa Clara, CA, USA) in combination with the Protein 80 Plus LabChip kit. Sample preparation and sample deposition on chip were performed according to the instructions of the manufacturer.	128 129 130 131 132 133 134 135 136 137 138
2.6 Determination of fatty acid composition	139
Fatty acid methyl esters were prepared from the extracted lipids by transesterification using 14% boron(III)-fluoride in methanol (Karlović Đ and Andrić 1996). The obtained samples were analysed by a GC Agilent 7890A system with flame ionization detector (FID) (Agilent Technologies, Santa Clara, California), auto injection module for liquid samples (CTC Analysis, Switzerland), equipped with fused silica capillary column (Supelco SP-2560, 100 m, 0.25 mm, 0.20 µm). Helium was used as a carrier gas (purity > 99.9997%, flow rate=1.00 mL.min ⁻¹). A total of 2 µL of sample was injected in split mode (25:1), and oven temperature was as follows: 140 °C for 5 min, followed by temperature ramp of 3 °C.min ⁻¹ to 240 °C and held for 10 min. The fatty acid peaks were identified by comparison of retention times with retention times of standards from Supelco 37 component fatty acid methyl ester mix (Sigma-Aldrich, EU) and with data from internal data library, based on previous experiments. Results were expressed as mass of fatty acid or fatty acid group (g) in 100 g of fatty acids.	140 141 142 143 144 145 146 147 148 149 150 151 152 153 154
2.7 Microbiological analysis	155
The microbial profile of cheese was investigated by enumeration of microorganisms (ISO 2003a), yeasts and moulds (ISO 2008), coagulase-positive staphylococci (ISO 2003b), beta-glucuronidase-positive <i>Escherichia coli</i> (ISO 2001),	156 157 158

sulfite-reducing bacteria (ISO 2003c), Enterobacteriaceae (ISO 2004b) and *Bacillus cereus* (EN ISO 2004a). Enumeration of bacterial endospores was performed by incubation of previously heated (100 °C, 5 min) initial suspensions of cheese samples on nutrient agar (HiMedia, India) at 30 °C for 72 h. The lactic acid bacteria count was determined by incubation (30 °C, 72 h) of inoculated Man, Rogosa and Sharpe (MRS) agar (LabM, UK). *Listeria monocytogenes* and *Salmonella* spp. were determined according to international standards (EN ISO 2004b; ISO 2006). Preparation of cheese samples, initial suspension and decimal dilutions for microbiological examination was performed according to international standard (ISO 2010). The number of viable bacteria was expressed as log CFU.g⁻¹.

2.8 Textural measurements

Textural properties of cheese samples made from donkeys' and goat milk were investigated using TA.XTplus Texture Analyser (Stable Micro Systems, Godalming, UK) with a 5 kg load cell at 20 °C. Prior to the analysis, the cheese samples were carefully removed from their packaging. Two tests for cheese texture measurements were employed. Cheese penetration test was performed using a 5 mm spherical probe (P/5S), and the obtained parameters were hardness and stickiness. A cheese fracture test was employed using a fracture wedge set in order to assess fracture/"bite force" of hard cheeses, and resulted parameters were hardness and brittleness. Test parameters for both measurements were as follows: 1 mm.s⁻¹ pre-test speed, 2 mm.s⁻¹ test speed and 10 mm.s⁻¹ post-test speed at 10.0% of strain. The obtained results were expressed as the mean values±standard deviation.

2.9 Sensory analysis

Sensory evaluation was carried out in the sensory laboratory which fulfils requirements of international standard (ISO 2007). A panel of seven assessors, with an average age of 40 years, experienced in the sensory assessment of dairy products, participated in the sensory analysis. In four training sessions, panelists were trained on the different types of hard cheese and each training session lasted approximately 1.5 h. During training, panelists were introduced with terms for some of the descriptors reported in literature (Lawlor et al. 2002). Consequently, panelists were asked to make modifications to this terminology and to adapt it to sensory description of the donkey/caprine cheese which was studied. The vocabulary used is in accordance with ISO (2000). Cheese samples were tempered and tested at room temperature. Prior to assessment, samples were cut into 5 g cubes and labelled with 3-digit codes and were served to panelists in individual booths. Odour (aroma), taste and texture were scored. Concerning odour property, the following attributes were examined: animal, strength/intensity and acid odour. Texture characteristics were characterized by greasy, smooth, tender, crumbly and hardness attributes and the taste properties by animal, creamy, fatty, salty and acid attributes. Sensory attributes were scored using a scale from 1-very intense to 9-no intensity (Stone and Sidel 2004), and

quantitative descriptive analysis (QDA) was employed for assessing sensory attributes of tested cheese samples. Panelists had access to water and apple throughout the evaluation.

3 Results

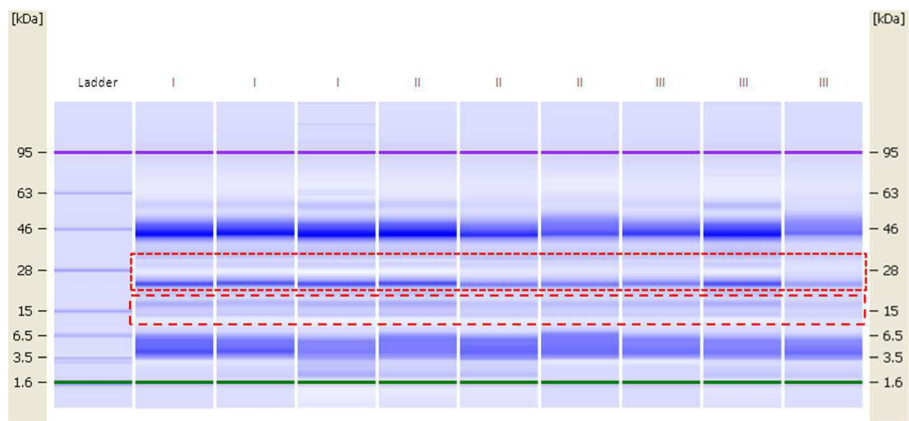
Chemical composition of the cheese is summarized in Table 1. The cheese in this study was classified as a high-fat extra-hard cheese, since its fat content on the dry matter basis (FDB) and moisture content on a fat-free basis (MFFB) were 65.83 and 46.43%, respectively (15). The cheese in this study had an energy value of 1321±46 KJ 100 g⁻¹.

The Protein 80 assay exhibited clear protein patterns in the range of molecular weight between 5 and 60 kDa (Fig. 1). By comparing protein patterns with those

Table 1 Chemical composition of donkey/caprine cheese

Parameter	Mean values (SD)
pH	4.71 (0.03)
Total solids (%)	61.47 (1.17)
Protein (%)	20.72 (1.29)
Total fat (%)	23.41 (0.82)
MFFB (%)	46.43 (2.21)
FDB (%)	65.83 (3.98)
Ash (%)	2.50 (0.15)
Lactose (%)	3.17 (0.09)
Salt (%)	9.55 (0.23)
Na (g.kg ⁻¹)	29.97 (0.17)
K (g.kg ⁻¹)	4.70 (0.19)
Ca (g.kg ⁻¹)	5.77 (0.02)
Mg (g.kg ⁻¹)	3.07 (0.50)
P (g.kg ⁻¹)	4.24 (0.05)
Fe (mg.kg ⁻¹)	1.62 (0.04)
Zn (mg.kg ⁻¹)	12.75 (0.18)
Total nitrogen (%)	3.25 (0.23)
NCN (%)	0.50 (0.02)
NPN (%)	0.07 (0.00)
Casein (%)	17.54 (1.31)
Whey protein (%)	2.73 (0.11)

^a Percentage moisture on a fat-free basis
^b Each value is the mean of eight cheeses from the same batch. Standard deviation values are given in parentheses
 MFFB moisture content on a fat-free basis, FDB fat on the dry basis content, NCN non-casein nitrogen, NPN non-protein nitrogen



Q5 **Fig. 1** Gel image of cheese protein fractions obtained by Protein 80 LabChip kit. Identified protein fractions are framed with red lines

previously published for donkeys' milk (Guo et al. 2007), it was possible to characterize the following proteins: lysozyme (approx. Mr 15 kDa), α -lactalbumin (approx. Mr 12 kDa) and immunoglobulins (approx. Mr 38 kDa). The protein fractions which were in the range of molecular weight corresponding to the casein fractions (23 to 33 kDa) were also visible.

Main determined fatty acids (>10%) were palmitic (C_{16:0}) and oleic acid (C_{18:2 n9-cis}) with 25.11 and 24.70%, respectively, which accounted for almost half of the total fatty acid content in analysed cheese (Table 2). Other important fatty acids (>1%) were caproic (C_{6:0}), caprylic (C_{8:0}), capric (C_{10:0}), lauric (C_{12:0}), myristoleic (C_{14:0}), palmitoleic (C_{16:1}), stearic (C_{18:0}), linoleic (C_{18:2 n6-cis}), α -linoleic (C_{18:3 n3}) and heneicosanoic acid (C_{21:0}).

E. coli, *Salmonella* spp., Enterobacteriaceae, coagulase-positive *staphylococci*, *L. monocytogenes*, *B. cereus* and *C. perfringens* were not detected in any of the tested samples. Total bacterial count, counts of lactic acid bacteria and yeasts were 6.34±0.03, 4.80±0.10 and 5.81±0.11 log CFU.g⁻¹, respectively.

According to performed measurements, the hardness of the cheese samples was 19.25±2.56 N for cheese penetration test and 40.78±1.42 N for cheese fracture test. According to the cheese fracture test, the brittleness value was relatively high (9.45±0.82 mm) implying that the measuring probe penetrated longer in the sample before cheese rupturing. The stickiness of the samples was -4.135±1.630 N. Cheese texture was moderately hard and crumbly since the samples crumbled in several parts.

Assessments of the sensory properties of the cheese in this study are shown in Fig. 2. The cheese samples had flavour characteristic of goat cheese. The odour of the cheese in this study could be described as moderately acidic. Cheese is rated as very salty with strong, pronounced creamy, fatty and acidic taste. Results of sensory analysis of tested samples were in agreement with data from textural measurements since the cheese in this study was moderately hard and crumbly.

213
214
215
216
217
218
219
220
221
222
223
224
225
226
227
228
229
230
231
232
233
234
235
236
237
238
239
240
241

t2.1 **Table 2** Fatty acid composition (% *m/m*) of donkey/caprine cheese

t2.2	Fatty acid	Mean values (SD)
t2.3	6:0	1.57 (0.05)
t2.4	8:0	2.84 (0.05)
t2.5	10:0	8.49 (0.08)
t2.6	11:0	0.70 (0.01)
t2.7	12:0	5.31 (0.02)
t2.8	13:0	0.23 (0.00)
t2.9	14:0	9.41 (0.01)
t2.10	14:1	0.32 (0.00)
t2.11	15:0	0.82 (0.00)
t2.12	16:0	25.11 (0.04)
t2.13	16:1	1.98 (0.00)
t2.14	17:0	0.76 (0.01)
t2.15	17:1	0.31 (0.05)
t2.16	18:0	6.92 (0.05)
t2.17	18:1n9c	24.70 (0.16)
t2.18	18:2n9c	7.23 (0.04)
t2.19	20:0	0.20 (0.01)
t2.20	18:3n3	1.41 (0.00)
t2.21	20:3n6	0.04 (0.01)
t2.22	20:3n3	0.05 (0.00)
t2.23	20:4n6	0.05 (0.00)
t2.24	21:0	1.09 (0.00)
t2.25	22:0	0.10 (0.01)
t2.26	23:0	0.36 (0.02)
t2.27	SFA	63.91 (0.14)
t2.28	MUFA	27.32 (0.11)
t2.29	PUFA	8.77 (0.04)
t2.30	UFA	36.09 (0.05)

Q6 ^a Each value is the mean of eight cheeses from the same batch. Standard deviation values are given in parentheses.

SD standard deviation, *SFA* saturated fatty acid, *MUFA* monounsaturated fatty acids, *PUFA* polyunsaturated fatty acids, *UFA* unsaturated fatty acids (total)

4 Discussion 242

4.1 Chemical analyses 243

The results for total solids (61.47%) and fat (23.41%) were comparable with results reported by other authors for hard caprine cheeses (Zeng et al. 2007), which can be explained by the similar amounts of total solids in donkeys' (9.53%) and caprine milk (10.2%) (Guo et al. 2007; Zeng et al. 2007). In contrast, the fat content (23.41%) of the cheese in this study was lower in comparison to data reported for hard caprine cheeses

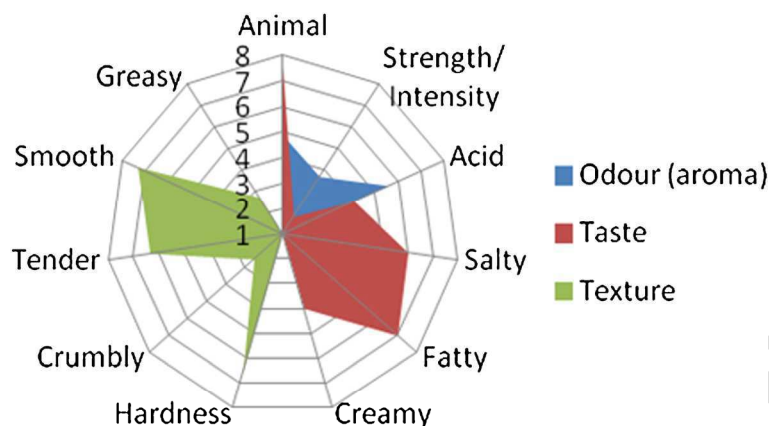


Fig. 2 Sensory properties of the donkey/caprine cheese

(26.2–28.0%) (Zeng et al. 2007). This could be attributed to low fat level in donkeys’ milk (0.3–1.8%) (Guo et al. 2007), which contributed to 60% of milk used in cheese production.

4.2 Mineral composition

The quantity of milk minerals including trace elements depends on a number of factors such as stage of lactation, feeding programs, genetic characteristics and environmental conditions (Gambelli et al. 1999; Fantuz et al. 2012). Moreover, mineral content in dairy products is also influenced by applied technological treatments. The high sodium values might be attributed to multiple additions of sodium chloride during the cheese production and to the long ripening time. Furthermore, the sodium content in donkeys’ milk is about two times higher in comparison to sodium content found in caprine or bovine milk (Soliman 2005; Fantuz et al. 2012). The cheese in this study could be characterized as rich in magnesium and potassium, since determined values of these minerals (Table 1) were significantly higher than maximum values reported for other types of cheese including hard cheeses made from bovine or caprine milk (Gambelli et al. 1999). Beside technological treatments, high levels of magnesium in the cheese may be a consequence of the high amount of this mineral in donkeys’ milk (Fantuz et al. 2012). On the other hand, caprine milk is rich in potassium (Soliman 2005). Magnesium plays an important role in over 300 enzyme reactions in the human body, while potassium participates in maintaining of water and acid–base balance (Soliman 2005).

4.3 Protein profile

High molecular weight fractions, lactoferrin (approx. 75 kDa) and serum albumin (approx. 68 kDa) were not detected (Fig. 1). Since these proteins are present in low concentrations in the donkeys’ and caprine milk, their absence in cheese is probably the result of the separation of whey during cheese production. The obtained results showed high number of low molecular mass fraction, probably due to a certain degree of casein

proteolysis that occurred during maturation of cheese (Irigoyen et al. 2000). 276
 Quantitative determination of protein fractions should be performed using HPLC with 277
 mass spectrometry and urea-PAGE methods and will be included in future work. 278

4.4 Fatty acid profile 279

The total content of medium-chain fatty acids (MCFAs; C_{6:0}, C_{8:0}, C_{10:0} and C_{12:0}) in 280
 the tested cheese samples was determined to be 18.21% of the total fatty acid content, 281
 which is significantly higher than MCFAs reported in bovine milk (Raynal-Ljutovac 282
 et al. 2008). MCFAs in milk are considered to have beneficial health effects in human 283
 nutrition. These acids are easily absorbed when consumed, passing through the intes- 284
 tine cell wall without esterification and undergoing oxidation in the liver to yield rapid 285
 source of energy instead of being deposited in adipose tissues (Raynal-Ljutovac et al. 286
 2008). Owing to this favoured pathway, they may contribute to the lowering of total 287
 circulating cholesterol and especially LDL cholesterol, thus having potential cardio- 288
 vascular benefits. Capric, caprylic acids and medium-chain triglycerides (MCT) are 289
 now used in the treatment of medical conditions such as malabsorption syndrome, 290
 infant malnutrition, gallstones, etc. (Haenlein 2004); therefore, their content in milk and 291
 dairy products is considered to be of great health significance. 292

4.5 Microbiological profile 293

Since Enterobacteriaceae including *E. coli* and *Salmonella* spp. cannot grow under a_w 294
 0.95, (Anthony and Fontana 2007), the low water activity of the cheese (0.94) was 295
 probably the main reason for absence of these bacteria. Also, the presence of lysozyme 296
 from donkeys' milk (Fig. 2) could be an additional antimicrobial factor towards *E. coli* 297
 and *Salmonella* spp. (Šarić et al. 2012; Tidona et al. 2011). A reduction in a_w during 298
 cheese ripening is the result of water loss by evaporation, salt and the hydrolysis of 299
 proteins and amino acids (Beresford et al. 2001). Due to a high NaCl content in cheese 300
 samples (Table 1), it is obvious that the salt addition represents the major factor for a_w 301
 depression. *C. perfringens* as mild halophile is not capable to grow in environments 302
 containing more than 5% of NaCl, while *Bacillus* spp. can tolerate up to 8% of NaCl. 303
 The minimum water activity required for *L. monocytogenes* is 0.92 (Anthony and 304
 Fontana 2007). Although *L. monocytogenes* is halotolerant and can survive for a long 305
 period in the presence of NaCl when the concentration is higher than 10%, environ- 306
 mental conditions in the cheese in this study including pH value (4.71) are not optimal 307
 for *L. monocytogenes* propagation. *Staphylococcus aureus* is a member of extreme 308
 halophiles, and a_w minimum necessary for its survival is 0.86 (Anthony and Fontana 309
 2007). In order to prevent the contamination of product with these pathogens, good 310
 manufacturing practices have to be adhered to. Detected bacteria and yeasts (moulds 311
 were under the limit of detection) mainly represented a part of the secondary flora in the 312
 cheese in this study. Microorganisms in all cheese varieties could be classified into 313
 starters and secondary flora originating from the ingredients or the environment 314
 (Beresford et al. 2001). Some part of secondary flora may originate from goat and 315
 donkey milk since pasteurization cannot completely eliminate initial microflora. 316
 Pasteurization of goat milk reduced the total bacteria count from 5.9 to 3.6 log 317
 CFU.mL⁻¹ (Buffa et al. 2001). The bacterial community from tested samples probably 318

belonged to highly salt-tolerant groups of bacteria. The other authors reported that bacterial population from Beaufort and Gruyère hard cheeses was mostly composed of highly salt-tolerant (15–20%) coryneform bacteria which managed the concentration of 10^{11} CFU.g⁻¹ during ripening (Schubert et al. 1996). Number of yeasts in the same hard cheeses decreased from 10^9 CFU.g⁻¹ to the 10^5 CFU.g⁻¹ at the end of ripening period.

4.6 Textural properties

One of the crucial criteria for the creation of novel food products and improvements of existing products are determining and predicting the food texture. Cheese texture measurements are very important since they contribute to the classification of the varieties of cheese where categories range from soft to very hard (Noel and Lefier 1991). The initial process that takes place in the development of structure and texture of hard cheese is the formation of different bonds and cohesive forces within and between the curd grains during and after the hard cheese manufacturing process (Pesenti and Luginbühl 1999). Higher hardness values obtained by fracture testing could be attributed to the larger surface area of the measuring probe lowering onto the cheese surface. Cheese texture was moderately hard, probably due to the high salt content (9.55%) and relatively high total solids content (61.47%). Rheological properties, especially hardness values, are generally affected by cheese composition. Cheese hardness values could be also influenced by fatty acid composition of tested cheese sample as well as by the milk fat globule size (Wiking et al. 2004).

According to data shown in Table 2, the content of saturated fatty acids is approximately 64%. It is well known that fats containing higher amount of saturated fatty acids express higher hardness values in comparison to fats containing higher content of unsaturated fatty acids. Moreover, according to Küçüköner and Haque (2006), as the fat content in cheese decreases, the hardness increases. During the ripening period, the cheese in this study became more crumbly due to low moisture content. Relatively high values of brittleness could be attributed to the creaminess of tested samples. These results are in agreement with the reports of other authors (Lawrence et al. 1987) who concluded that during the ripening period, the intact casein network is weakened as the casein fractions are hydrolysed by residual rennet. During this period, the texture of cheese curd rapidly converted into a smoother product (Küçüköner and Haque 2006). Textural age-related changes of cheese properties could be also presented as a compromise between cheese hardening caused by dehydration and softening affected by proteolysis.

4.7 Sensory attributes

Despite the fact that milk used for cheese production was 60% donkey and 40% caprine milk, the cheese in this study had flavour characteristic of goat cheese. According to literature, several aroma compounds are responsible for the flavour characteristic of goat cheese: 3-methylbutanoic acid, octanoic acid, 4-methyloctanoic acid, 4-ethyloctanoic acid and nonanoic acid (Gaborit et al. 2001). Among them, 4-methyloctanoic acid and 4-ethyloctanoic acid contributed mostly to the specific flavour, since they are perceived even at very low concentrations. Beside octanoic acid (2.89%),

caprylic acid methyl ester (1.62%) and capric acid methyl ester (8.57%) were detected 362
 in tested samples (Table 2). Previous investigations designated mineral salts and lactic 363
 acid as the main taste active compounds in the caprine cheese (Engel et al. 2000). The 364
 distinctly salty taste was the result of salting during cheese production. Regarding its 365
 high fat content (Table 1), this cheese was slightly creamy in texture. Fat is very 366
 important in cheese production especially for taste and odour creation as well as for 367
 softness and ability to melt. According to Delgado et al. (2011), the flavour of cheese 368
 depends on several reactions, especially the metabolism of lactose and lactate, lipolysis 369
 and proteolysis in the cheese. High lactose content in donkey milk (Guo et al. 2007) 370
 allows intensive metabolism of lactose and lactate. 371

5 Conclusions 372

The high-fat extra-hard cheese produced from donkeys' and caprine milk mixture had 373
 acceptable sensory and textural properties, which were influenced by its unique 374
 chemical composition including fatty acid composition, fat and moisture content. 375
 Octanoic acid, caprylic acid methyl ester and capric acid methyl ester probably played 376
 an important role in the formation of flavour characteristic of goat cheese of tested 377
 samples even though their content was lower in comparison to dominant palmitic and 378
 oleic fatty acids. The cheese in this study had a smooth and soft texture and can be 379
 described as very salty with an intensive creamy, fatty and acidic taste. The moderately 380
 hard and crumbly cheese texture can be attributed to the low moisture content. 381
 Stickiness and relatively high brittleness of the samples can be attributed to sample 382
 creaminess and proteolysis during the 6-month cheese ripening. If the cheese is 383
 produced in accordance with good manufacturing practice, it can be considered as 384
 microbiologically safe due to its low water activity and high salt concentration. The 385
 high amount of medium-chain fatty acids, as well as high levels of magnesium and 386
 potassium determined in donkey/caprine cheese, could position this type of cheese as a 387
 high-quality functional product. 388

Acknowledgments This work is a part of the National Project (TR-31029) financially supported by the 389
 Ministry of Education and Science, Republic of Serbia. Authors are grateful to Slobodan Simić and Nikola 390
 Nilić (Special Nature Reserve "Zasavica", Serbia) for providing the cheese samples. 391

Conflict of interest Authors declare that they have no conflict of interest. 392

393

394

References 395

Anthony J and Fontana J (2007) Minimum water activity limits for growth of microorganisms. In G. V. 396
 Barbosa-Cánovas, A. J. Fontana, S. J. Schmidt, & T. P. Labuza (Eds.), *Water activity in foods: 397*
fundamentals and applications. (pp. 405). Blackwell Publishing 398
 AOAC (1975) Nitrogen in cheese. Official method 920.123. Association of Official Analytical Chemists, 399
 Washington, DC 400
 AOAC (2000a) Determination of total solids in cheese. Official method 925.09. Association of Official 401
 Analytical Chemists, Washington, DC 402

AOAC (2000b) Noncasein nitrogen content of milk. Official method 998.05. Association of Official Analytical Chemists, Washington, DC	403 404
Barlowska J, Swajkowska M, Litwinczuk Z, Krol J (2011) Nutritional value and technological suitability of milk from various animal species used for dairy production. <i>Compr Rev Food Sci F</i> 10:291–302	405 406
Beresford TP, Fitzsimons NA, Brennan NL, Cogan TM (2001) Recent advances in cheese microbiology. <i>Int Dairy J</i> 11:259–274	407 408
Boikhutso JM (2010) Microbiological, physico-chemical and sensory quality aspects of dairy desserts manufactured from cottage cheese. URL: http://repository.up.ac.za/bitstream/handle/2263/26061/dissertation.pdf?sequence=1 Accessed 15.12.14	409 410 411
Buffa M, Guamis B, Royo C, Trujillo AJ (2001) Microbiological changes throughout ripening of goat cheese made from raw, pasteurized and high-pressure treated milk. <i>Food Microbiol</i> 18:45–51	412 413
Codex Standard 283 (1978) Codex general standard for cheese 283, In Codex Alimentarius, Milk and milk products, (2nd ed.), (pp. 80). FAO and WHO, 2011	414 415
Delgado FJ, González-Crespo J, Cava R, Ramirez R (2011) Effect of high-pressure treatment on the volatile profile of a mature raw goat milk cheese with paprika on rind. <i>Innovat Food Sci Emerg Tech</i> 12:98–103	416 417
EN ISO (2004) Microbiology of food and animal feeding stuffs—horizontal method for the enumeration of presumptive <i>Bacillus cereus</i> - Colony-count technique at 30 °C. ISO standard 7932. Geneva, Switzerland: International Organization for Standardization	418 419 420
EN ISO (2004) Microbiology of food and animal feeding stuffs—horizontal method for the detection and enumeration of <i>Listeria monocytogenes</i> —part 1: detection method. ISO standard 11290-1:1996/A1:2004. International Organization for Standardization, Geneva	421 422 423
Engel E, Nicklaus S, Gareme A, Septier C, Salles C, Le Quere JL (2000) Taste active compounds in goat cheese water-soluble extract. 1. Development and sensory validation of a model water-soluble extract. <i>J Agric Food Chem</i> 48:4252–4259	424 425 426
Fantuz F, Ferraro S, Todini L, Piloni R, Mariani P, Salimei E (2012) Donkey milk concentration of calcium, phosphorus, potassium, sodium and magnesium. <i>Int Dairy J</i> 24:143–145	427 428
FIL-IDF (1981) Milk. Determination of fat content. Gerber butyrometers. International Dairy Federation Standard 105	429 430
Gaborit P, Menard A, Morgan F (2001) Impact of ripening strains on the typical flavour of goat cheeses. <i>Int Dairy J</i> 11:315–325	431 432
Gambelli L, Belloni P, Ingrao G, Pizzoferrato L, Santaroni GP (1999) Minerals and trace elements in some Italian dairy products. <i>J Food Comp Anal</i> 12:27–35	433 434
Guo HY, Pang K, Zhang XY, Zhao L, Chen SW, Dong ML, Ren FZ (2007) Composition, physicochemical properties, nitrogen fraction distribution, and amino acid profile of donkey milk. <i>J Dairy Sci</i> 90:1635–1643	435 436 437
Haenlein GFW (2004) Goat milk in human nutrition. <i>Small Ruminant Res</i> 51:155–163	438
IDF (1964) Determination of ash content. IDF standard 27	439
IDF (1988) Cheese and processed cheese products—determination of chloride content—potentiometric method. IDF Standard 88A	440 441
IDF (2001) Milk—determination of nitrogen content—part 4: determination of non-protein-nitrogen content. IDF standard 020-4	442 443
Irigoyen A, Izco JM, Ibanez FC, Torre P (2000) Evaluation of the effect of rennet type on casein proteolysis in an ovine milk cheese by means of capillary electrophoresis. <i>J Chromatogr A</i> 881:59–67	444 445
ISO (2000) Sensory analysis—vocabulary. ISO standard 5492. International Organization for Standardization, Geneva	446 447
ISO (2001) Microbiology of food and animal feeding stuffs—horizontal methods for the enumeration of beta-glucuronidase-positive <i>Escherichia coli</i> —part 2: colony count technique at 44 degrees C using 5-bromo-4-chloro-3-indolyl beta-D-glucuronide. ISO standard 16649-2. Geneva, Switzerland: International Organization for Standardization	448 449 450 451
ISO (2003a) Microbiology of food and animal feeding stuffs—horizontal method for the enumeration of microorganisms—colony count technique at 30 degrees C. ISO standard 4833. International Organization for Standardization, Geneva	452 453 454
ISO (2003b) Microbiology of food and animal feeding stuffs—horizontal method for the enumeration of coagulase-positive staphylococci (<i>Staphylococcus aureus</i> and other species)—part 1: technique using BairdParker agar medium. ISO standard 6888-1:1999/A1:2003. International Organization for Standardization, Geneva	455 456 457 458
ISO (2003c) Microbiology of food and animal feeding stuffs—horizontal method for the enumeration of sulfite-reducing bacteria growing under anaerobic conditions. ISO standard 15213. International Organization for Standardization, Geneva	459 460 461

ISO (2004a) Microbiology of food and animal feeding stuffs—determination of water activity. ISO standard 21807. International Organization for Standardization, Geneva	462 463
ISO (2004b) Microbiology of food and animal feeding stuffs—horizontal methods for the detection and enumeration of Enterobacteriaceae—part 2. Colony count method. ISO standard 21528-2. International Organization for Standardization, Geneva	464 465 466
ISO (2004c) Milk—determination of the casein-nitrogen content—part 2: direct method. ISO standard 17997-2 IDF 029-2:2004. International Organization for Standardization, Geneva	467 468
ISO (2006) Microbiology of food and animal feeding stuffs—horizontal method for the detection of Salmonella spp. ISO standard 6579: 2002/AC: 2006. International Organization for Standardization, Geneva	469 470 471
ISO (2007) Sensory analysis—general guidance for the desing of test rooms. ISO standard 8589. International Organization for Standardization, Geneva	472 473
ISO (2008) Microbiology of food and animal feeding stuffs—horizontal method for the enumeration of yeasts and moulds—part 2: colony count technique in products with water activity less than or equal to 0,95. ISO standard 21527-2. International Organization for Standardization, Geneva	474 475 476
ISO (2010) Microbiology of food and animal feeding stuffs—preparation of test samples, initial suspension and decimal dilutions for microbiological examination—part 5: specific rules for the preparation of milk and milk products. ISO standard 6887-5. International Organization for Standardization, Geneva	477 478 479
Karlović Đ, Andrić N (1996) Kontrola kvaliteta semena uljarica. Univerzitet u Novom Sadu, Tehnološki fakultet Novi Sad, Savezno ministarstvo za nauku tehnologiju i razvoj, Savezni zavod za standardizaciju, Beograd	480 481 482
Kindstedt PS (2012) Cheese and culture: a history of cheese and its place in western civilization. Chelsea Green Publishing, VT	483 484
Küçüköner E, Haque ZU (2006) Physicochemical properties of low-fat and full-fat cheddar cheeses. Int J Dairy Technol 59:166–170	485 486
Lawlor JB, Conor M, Delahunty CM, Martin G, Wilkinson MG, Sheehan J (2002) Relationships between the gross, non-volatile and volatile compositions and the sensory attributes of eight hard-type cheeses. Int Dairy J 12:493–509	487 488 489
Lawrence RC, Creamer LK, Gilles J (1987) Texture development during cheese ripening. J Dairy Sci 70: 1748–1760	490 491
GEA Niro (1978) Analytical methods for dry milk products (4th ed.). Søborg	492
Noel Y, Lefier D (1991) Factors affecting the consistency of ripened soft & semi-soft cheese. Bull Int Dairy Fed 268:44–47	493 494
Nolan DA, Chamblin DC, Troller JA (1992) Minimal water activity levels for growth and survival of <i>Listeria monocytogenes</i> and <i>Listeria innocua</i> . Int J Food Microbiol 16:323–335	495 496
O'Brien NM & O'Connor TP (2004) Nutritional aspects of cheese. In P. F. Fox, P. L. H. McSweeney, T. M. Cogan, & T. P. Guinee (Eds.), Cheese, chemistry, physics and microbiology, (3rd ed.), Elsevier Press	497 498
Pesenti V, Luginbühl W (1999) Assessment of cohesion in gruyere-type cheese by rheological methods. J Texture Stud 30:1–16	499 500
Raynal-Ljutovac K, Lagriffoul G, Paccard P, Guillet I, Chilliard Y (2008) Composition of goat and sheep milk products: an update. Small Ruminant Res 79:57–72	501 502
Salimei E, Fantuz F, Coppola R, Chiofalo B, Polidori P, Varisco G (2004) Composition and characteristics of ass's milk. Anim Res 53:67–78	503 504
Šarić ČL, Šarić MB, Mandić IA, Torbica MA, Tomić MJ, Cvetković DD, Okanović G (2012) Antibacterial properties of Domestic Balkan donkey' milk. Int Dairy J 25:142–146	505 506
Schubert K, Ludwig W, Springer N, Kroppenstedt RM, Accolas JP, Fiedler F (1996) Two coryneform bacteria isolated from the surface of French Gruyère and Beaufort cheeses are new species of the genus <i>Brachybacterium alimentarium</i> sp. nov. and <i>Brachybacterium tyrophermentas</i> sp. nov. Int J Syst Bacteriol 46:81–94687	507 508 509 510
Soliman GZA (2005) Comparison of chemical and mineral content of milk from human, cow, buffalo, camel and goat in Egypt. EJHM 21:116–130	511 512
Stone H and Sidel JL (2004) The organization and operation of a sensory evaluation program. In Sensory Evaluation Practices, (3rd ed.). (pp. 21–67). Academic Press	513 514
Tidona F, Sekse C, Criscione A, Jacobsen M, Bordonaro S, Marletta D et al (2011) Antimicrobial effect of donkeys' milk digested in vitro with human gastrointestinal enzymes. Int Dairy J 21:158–165	515 516
Uniacke-Lowe T (2011) Studies on equine milk and comparative studies on equine and bovine milk systems. URL: http://library.ucc.ie/record=b2027873~S0 Accessed 10.07.2014	517 518

Wielicka A & Gorynska-Goldmann E (2005) World and Poland per capita cheese consumption. <i>Roczniki Akademii Rolniczej w Poznaniu – CCCLXVII, Ekon.</i> , 4, 157–166. URL http://www.jard.edu.pl/pub/17_4_2005.pdf Accessed 10.07.2014	519 520 521
Wiking L, Stagsted J, Bjorck L, Nielsen JH (2004) Milk fat globule size is affected by fat production in dairy cows. <i>Int Dairy J</i> 14:909–913	522 523
Zeng SS, Soryal K, Fekadu B, Bah B, Popham T (2007) Predictive formulae for goat cheese yield based on milk composition. <i>Small Ruminant Res</i> 69:180–186	524 525 526

UNCORRECTED PROOF

AUTHOR QUERIES

AUTHOR PLEASE ANSWER ALL QUERIES.

- Q1. Springer offers the possibility to send copies of your article to colleagues. Please supply up to 10 e-mail addresses of colleagues, and we will send a PDF copy of your paper to each of them.
- Q2. O'Brien and O'Connor 1996 has been changed to O'Brien and O'Connor 2004 as per the reference list. Please check if okay.
- Q3. "Tidona et al. 2007" is cited in text but not given in the reference list. Please provide details in the list or delete the citation from the text.
- Q4. Please specify the data in the table body corresponding to the footnote labeled "a" and "b".
- Q5. Figure 1 contains text below the minimum required font size of 6pts. Otherwise, please provide replacement figure file.
- Q6. Please specify the data in the table body corresponding to the footnote labeled "a".
- Q7. Nolan et al. (1992) was not cited anywhere in the text. Please provide a citation. Alternatively, delete the item from the list.